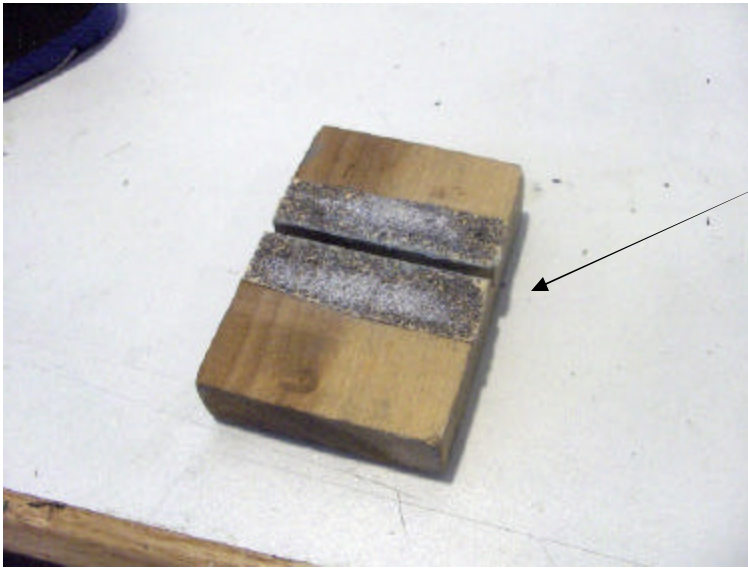




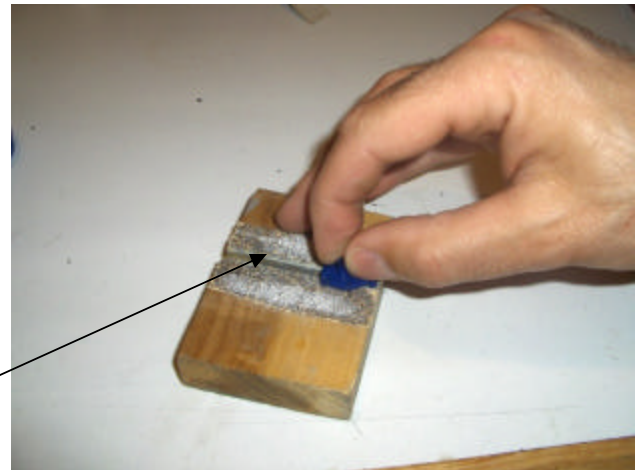
GUIDE FLAG MODIFICATIONS

By Mike Chiocchio

Front tire ride height is very important when tuning a non-magnet slot car. It is important to be able to tune your car to have your front tires firmly on the track or slightly raised. Depending on your car, one way to perform this is by changing the thickness of the guide.

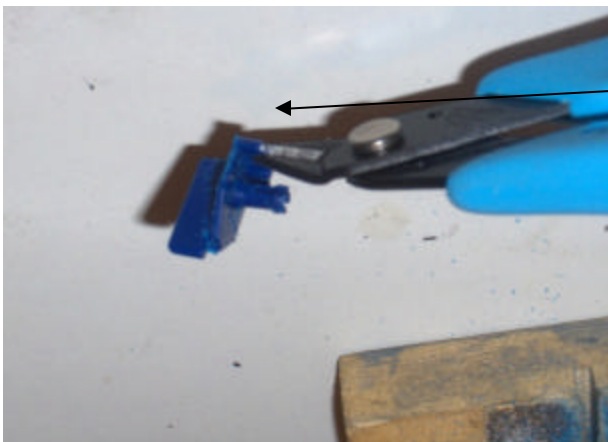


Here is a very simple tool you can use to make your guide thinner. This is a piece of wood with a slot cut in to represent the slot in a track. A piece of sandpaper is glued to the wood. Thanks to Dick McManus for designing this tool!



Slide your guide back and forth across the sandpaper. You can take a good amount off without ruining the integrity of the guide. You may have to clean up a little bit of the guide that the sandpaper does not reach near the blade.

In this picture, I am taking off part of the guide to allow for increased rotation of the guide.



Modified guide.

